

# Leading innovation for leading projects.

The next  
generation in civil  
engineering  
infrastructure.

---



**Faster**



**Safer**



**Environmentally Sustainable**

# Whatever you construct, we can help you make it Smarter. Safer. Faster. More Efficiently.

## Stormwater Products



### Plastic, not cement

Our sustainable plastic solutions are the superior alternative to cement, the world's single biggest industrial cause of carbon pollution. Cement is the most widely used man-made material in existence, second only to water as the most consumed resource on the planet!



### 137 times more carbon efficient

Revolutionary, easier to source and customisable, Smartstream Technology products are now being used to reduce carbon footprint and future-proof infrastructure.



### Lightweight and safer

Concrete infrastructure is large, 200kg heavy, requiring machinery and confined space entry to install, then they deteriorate. Compare this with our next generation plastic products at 25kg, surface level installation and access durable for a 100-year lifetime without deterioration.



### Efficiency

Saving costs on heavy lifting, personnel, manufacture and delivery, makes Smartstream Technology products the more efficient choice to improve all performance indicators on all aspects of civil engineering projects.



### Australian owned and innovated

We are a wholly owned, Australian family company and innovators in civil engineering infrastructure solutions using roto moulding and plastic injection technology, minimising concrete use, to produce a highly developed range of stormwater products.

We know the industry; we've been in it since 1984, we understand the challenges. We're dedicated to investigating new processes and materials – once the industry's alternative, now fast becoming the product of choice.

# eco-BITE™ Multi Pollutant Trap

Scan the QR code to learn more about the game-changing eco-BITE™

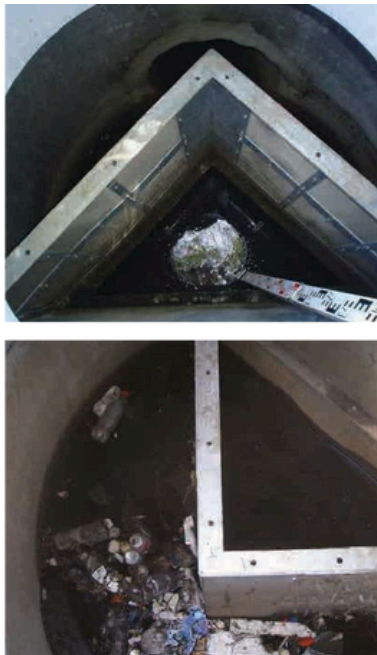


## Revolutionary design for maximum pollutant trapping and easier maintenance.

Unique 'V' shaped screen creates a dual vortex-effect for maximum pollutant retention. Traps and retains gross pollutants, storm water pollutants, fine particles and hydrocarbons.

Targets the greatest concentrations of storm water pollution of frequent low flows and first flush events, especially frequent low flows. Modular, custom designed to specification – types of pollutants, site details, hydraulic data, storage capacity, in/outlets.

Smartstream Technology has developed the eco-BITE™ supported by environmentally friendly product credentials. Contact Smartstream Technology for cleaning, maintenance, monitoring, and reporting agreements.



Low head loss



Retrofit into existing pipelines and drains



Long service life with no moving parts



Interchangeable screens to target selected pollutants



Small footprint facilitates small space installation



Single chamber for simplified installation



Equal precipitation reduces blockage



Optional removable basket for pollutant recovery



Accommodates multiple inlets/outlets



Modular design to extend downstream treatment systems

# Poo Pit™ Maintenance Shaft

Over  
**120,000**  
already in  
service

With its intuitive design, the Smartstream Technology **Poo Pit™** is revolutionising maintenance shaft installation. Use the Australian-manufactured **Poo Pit™** in your next sewer, stormwater or subsoil drainage project for a safer, cost-effective installation.

## Is the Poo Pit™ right for your project?

- Available with DN 225mm or DN 300mm riser
- Built to suit solvent weld or rubber ring PVC
- Tested to Depth of 7.5m (Half Pit available for shallow installations)
- Achieves any angle between 65°-315°

## The Poo Pit™



User friendly, easy to lift & lightweight



Accommodates pipes of all materials



Easy surface inspection of upstream & downstream pipes



100% watertight, UV resistant and corrosion resistant internal & external



Fittings prefabricated prior to rapid delivery



Scan the QR code to learn more about the **Poo Pit™**





# Smart Pit™ & Mini Pit™

**The most versatile  
Australian designed and  
manufactured MH & MC  
with significantly reduced  
carbon footprint.**

Groundbreaking in sewers, water,  
stormwater and subsoil applications.



Small footprint facilitates  
small space installation



Eliminates Infiltration  
& In-flow at the Pit



Faster Installation



Most Versatile  
Product of its Type



Lightweight



Superior Hydraulic  
Performance & Safety

## Smart Pit™

1,000mm / 3' 4"



## Mini Pit™

600mm / 2'



# Case Studies

## StormPit™ PE Manhole & Shared and Single Lot Connection Pits

### StormPit™ PE Manhole

**This next generation solution signals yet another challenge to traditional thinking and the traditional way of constructing access chambers.**

Smartstream Technology has undertaken the first stage of the trial installation of its StormPit™ Access Chamber for the City of Swan in Henley Brook in Western Australia.

- Less than 1% carbon footprint vs concrete
  - Lightweight & 100% watertight
  - Easier and quicker to install
  - Corrosion resistant, Acid Sulphate Soils (ASS) compatible
- The StormPit™ complements PE plastic ribbed pipes that are becoming more prevalent and superior to concrete pipes.



Scan here to see the ground-breaking StormPit™ in action in Henley Brook.



### Shared and Single Lot Connection Pits

Eliminate the need for confined space entry (CSE) with all monitoring and maintenance safely performed from the surface. Australian designed and manufactured Pits for use in stormwater, designed to connect multiple pipes of all material. The City of Swan are eliminating the need for confined space entry (CSE) with all monitoring and maintenance safely performed from the surface.

- Lightweight, pre-fabricated prior to rapid delivery
- Small eco footprint and improved efficiencies
- Corrosion resistant, internal & external
- Reduced transport and handling cost
- No concrete encasement required
- Eliminate confined space and reduce excavation size

Scan here to uncover more about Single & Shared Lot Connection Pits.



**Working with Smartstream Technology,  
we guarantee you will be fully supported  
by our highly experienced and  
professional team who will offer the  
advice and service you need to efficiently  
support your next project.**

**Be part of a leading project, by using  
leading innovation.**

**Contact us for a consultation today.**



**E** [solutions@smartstream.net.au](mailto:solutions@smartstream.net.au) **P** 08 9526 1440  
17 Cardup Siding Road, Cardup WA 6122  
[smartstream.net.au](http://smartstream.net.au)